

42/26

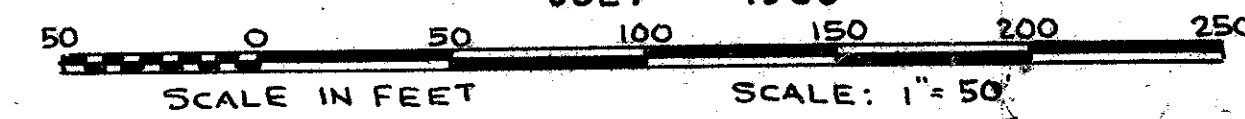
BEDFORD MEWS AT WELLINGTON - P.U.D.

26

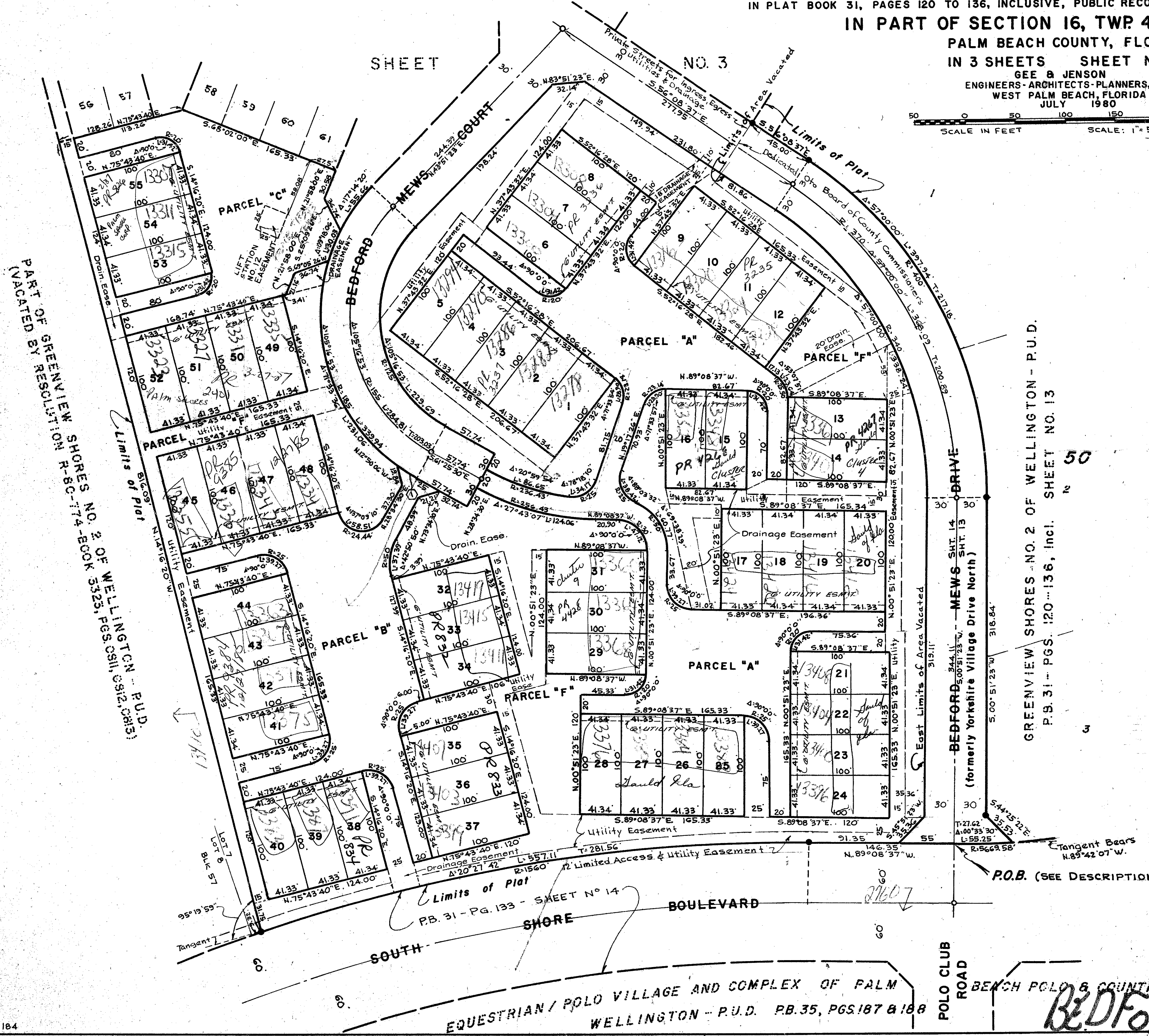
BEING A REPLAT OF PART OF GREENVIEW SHORES NO. 2 OF WELLINGTON - P.U.D. AS RECORDED IN PLAT BOOK 31, PAGES 120 TO 136, INCLUSIVE, PUBLIC RECORDS OF PALM BEACH COUNTY, FLORIDA IN PART OF SECTION 16, TWP 44 S., RGE. 41 E.

PALM BEACH COUNTY, FLORIDA
IN 3 SHEETS SHEET NO. 2

GEE & JENSON
ENGINEERS-ARCHITECTS-PLANNERS, INC.
WEST PALM BEACH, FLORIDA
JULY 1980



STATE OF FLORIDA
COUNTY OF PALM BEACH
This Plat was filed for record at _____ M.
this _____ day of _____, 1981
and duly filed in Plat Book No. _____
on page _____
JOHN B. DUNKLE, Clerk Circuit Court
By _____ D.C.



NOTES

- All bearings shown hereon are relative to an assumed meridian used throughout Wellington.
- Building Setback Lines shall be as required by Palm Beach County Zoning Regulations.
- There shall be no buildings or other structures placed on Utility Easements.
- There shall be no buildings or any kind of construction or trees or shrubs placed on Drainage Easements.
- Easements are for Public Utilities, unless otherwise noted.
- Where Utility Easements and Drainage Easements cross, Drainage Easements shall take precedent.
- denotes Permanent Reference Monument.
- denotes Permanent Control Point.

NOTE: PART OF GREENVIEW SHORES NO. 2 OF WELLINGTON - P.U.D. WAS VACATED BY RESOLUTION NO. R-80-774 BOOK 3323, PAGES 1811, 1812, & 1813.

0332-302

CURVE DATA
denotes Curve Number & Location
R=185'
Δ=07°10'51"
L=23.18'
T=11.61'

GREENVIEW SHORES - NO. 2 OF WELLINGTON - P.U.D.
P.B. 31 - PGS. 120-136, Incl. SHEET NO. 13

PART OF GREENVIEW SHORES NO. 2 OF WELLINGTON - P.U.D.
(VACATED BY RESOLUTION R-80-774 BOOK 3323, PGS. 1811, 1812, 1813)

P.O.B. (SEE DESCRIPTION)

EQUESTRIAN / POLO VILLAGE AND COMPLEX OF PALM WELLINGTON - P.U.D. P.B. 35, PGS. 187 & 188

BENCH POLO & COUNTRY CLUB
BEDFORD MEWS AT WELL. 42/26